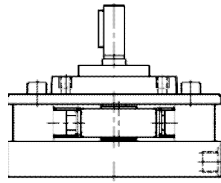


**DESCRIPTION**



Radial Piston Pumps works on the principle of reciprocating motion of the plunger in the cylinder. Available with 3, 5 & 7 Plungers & Single delivery & double delivery with single row of elements & double row of elements. Rugged, with all parts renewable by replacement. Oil immersed type, open execution, face mounting, fixed delivery, valve controlled, bi-directional rotation of shaft.  
Available with extension shaft to couple low pressure pumps.

**TECHNICAL SPECIFICATIONS**

Designation..... 1R basic radial piston pump group.  
Design ..... Radial piston, valve controlled.  
No. of pistons..... 3, 5 or 7; depending upon flow requirement.  
Mounting..... Face mounting.  
Interface ..... Factory standard.  
Direction of rotation ..... 1R Can be run in either direction.  
1RE..... Depends upon direction of rotation of low pressure pump.  
Connection ..... Suction Sucks oil directly from tank, no suction port is provided.  
Delivery ..... G 3/8female.  
Speed range ..... 500 to 2000rpm.  
Hydraulic medium ..... Mineral oil.  
Viscosity range ..... 10 to 100 cSt. Optimum  
Viscosity range ..... 16 to 32 cSt.  
Temperature range..... -10 °C to +80°C.  
(Do not exceed viscosity limits at extreme temperatures for efficient running of the pump) Fluid cleanliness requirement As per ISO Code 16/13.  
Performance ..... Refer Table No. 1. Efficiency  
of Pump : 95% and above

Theoretical Pressure and Flow Ratings						
Operating Pr. bar	550	450	350	300	250	200
No. of Pumping Elements	Flow (l / min) @ 1450 rpm					
	A	B	C	D	E	F
3	1.75	2.73	3.94	4.62	5.36	6.15
5	2.92	4.56	6.56	7.7	8.93	10.25
7	4.08	6.38	9.18	10.78	12.5	14.35

Power Requirement (HP) = 0.002632 x (Pressure) x ( Flow )  
Power Requirement (KW) = 0.001934 x (Pressure) x ( Flow )

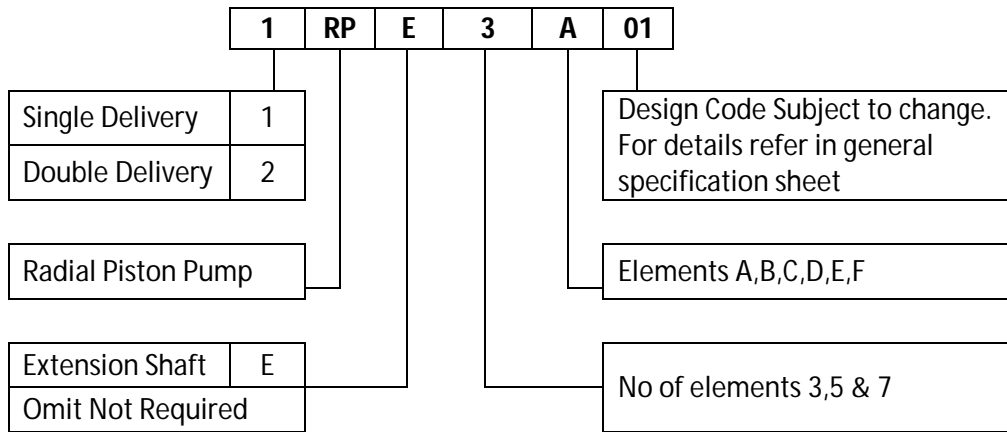
**Valse Fluid Power Private Limited**

**Works:**  
Industrial Estate, Sagar Road,  
Shimoga, Karnataka- 577204 (INDIA)

**Design Center:**  
Industrial Estate, Udyambag  
BELGAUM – 590 008 (INDIA)

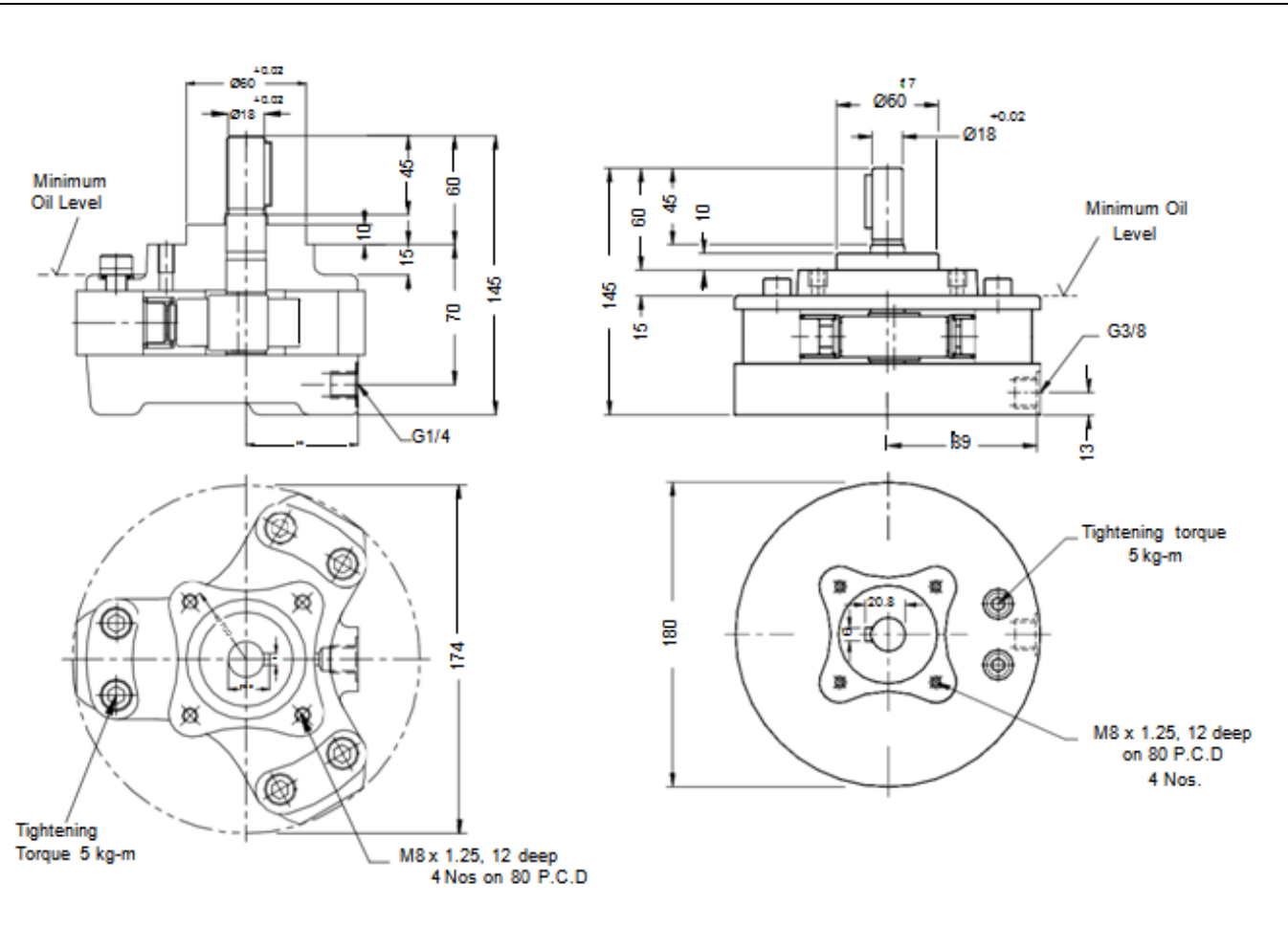
**Call / Whatsapp:** +91 984 592 6984  
**Email:** Sales@valsehydraulics.com  
**Website:** [www.valsehydraulics.com](http://www.valsehydraulics.com)

**ORDERING CODE**



**Note:** Suffix **S** for short length shaft.

**UNIT DIMENSIONS**



**FOR BELL HOUSING & EXTENSION BRACKET REFER DATASHEET 12900**

**Valse Fluid Power Private Limited**

**Works:**  
Industrial Estate, Sagar Road,  
Shimoga, Karnataka- 577204 (INDIA)

**Design Center:**  
Industrial Estate, Udyambag  
BELGAUM – 590 008 (INDIA)

**Call / Whatsapp:** +91 984 592 6984  
**Email:** Sales@valsehydraulics.com  
**Website:** www.valsehydraulics.com

