

Ref. No. D 21000
Release Date: Oct 03

**DIRECT OPTD. PRESSURE RELIEF VALVE
(DRV)**


www.valsehydraulics.com

ORDERING CODE

DRV	H	06	K	315	01
-----	---	----	---	-----	----

Direct Acting
Pr. Relief Valve

Design Code Subject to change.
For details refer in General
specification sheet

Hand Knob	H
Set Screw	S

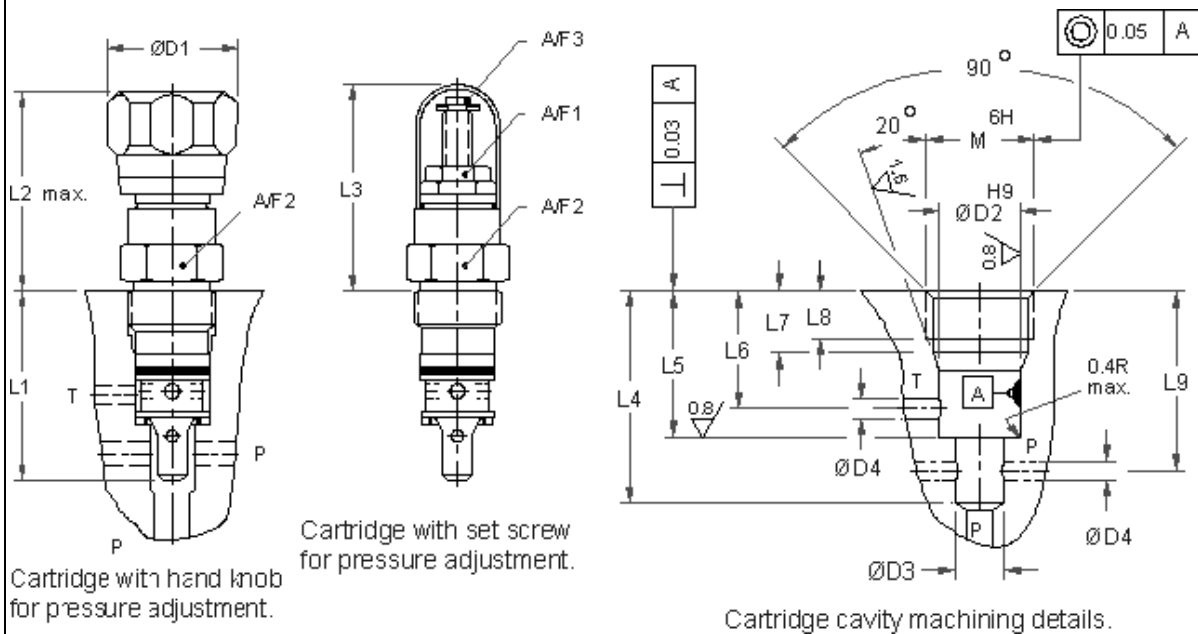
Pressure Ranges up to
25,50,100,200,315,400

Sizes 06, 10

K	Cartridge Only
T	Threaded Mounting
S	Manifold Mounting

UNIT DIMENSIONS

Cartridge Details



Size	Mass Kg	AF 1	A/F 2	A/F 3	M	ØD 1	ØD 2	ØD 3	ØD 4	L1	L2	L3	L4	L5 ±0.2	L6 ±0.2	L7 ±0.2	L8	L9	Tightening torque Nm.
6	0.45	19	30	4	M28 x 1.5	43	25	15	6	64	60	61	65	45	35	19	15	55	120
10	0.9	22	36	5	M35 x 1.5	48	32	19	10	77	78	75	80	52	41	23	18	69	140

Valse Fluid Power Private Limited

Works:
Industrial Estate, Sagar Road,
Shimoga, Karnataka- 577204 (INDIA)

Design Center:
Industrial Estate, Udyambag
BELGAUM – 590 008 (INDIA)

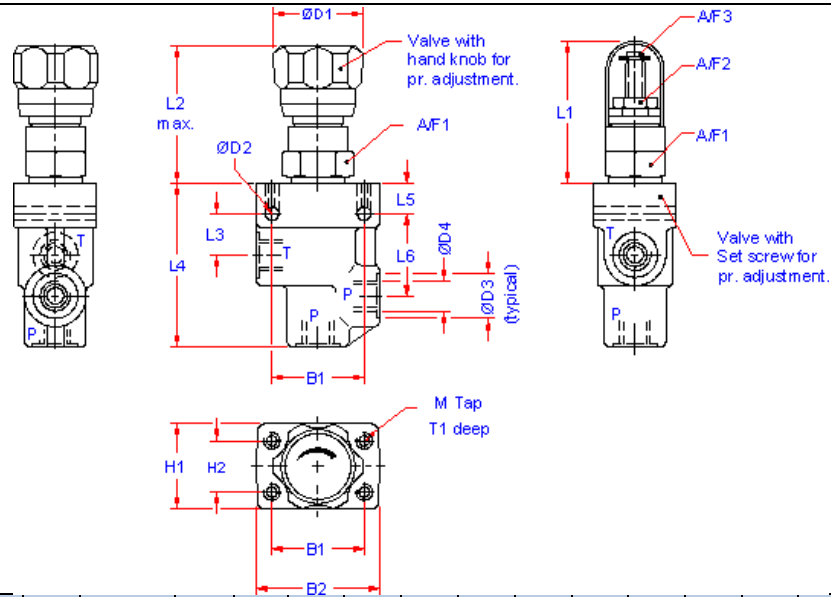
Call / Whatsapp: +91 984 592 6984
Email: Sales@valsehydraulics.com
Website: www.valsehydraulics.com

Ref. No. D 21000
Release Date: Oct 03

**DIRECT OPTD. PRESSURE RELIEF VALVE
(DRV)**

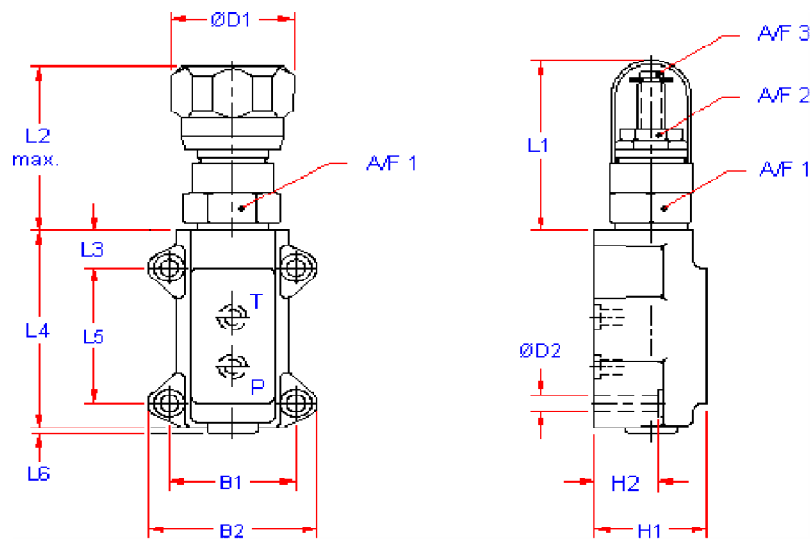

www.valsehydraulics.com

Threaded Valve Details



Size	Mass Kg.	A/F 1	A/F 2	A/F 3	M	ØD1	ØD2	ØD3	ØD4	L1	L2	L3	L4	L5 ± 0.2	L6 ± 0.2	L7 ± 0.2	L8	L9	Tightening torque Nm.
6	0.45	19	30	4	M28x1.5	43	25	15	6	64	60	61	65	45	35	19	15	55	120
10	0.9	22	36	5	M35x1.5	48	32	19	10	77	80	78	80	52	41	23	18	69	140

Manifold Mounting Details



Size	Mass Kg.	B1	B2	ØD1	ØD2	A/F 1	A/F 2	A/F 3	L1	L2	L3	L4	L5	L6	H1	H2
6	1.1	45	60	43	6.6	30	19	4	65	58	15	80	55	4	40	21
10	2.4	60	80	48	9	36	22	5	80	76	20	100	70	5	55	28

Valse Fluid Power Private Limited

Works:
Industrial Estate, Sagar Road,
Shimoga, Karnataka- 577204 (INDIA)

Design Center:
Industrial Estate, Udyambag
BELGAUM – 590 008 (INDIA)

Call / Whatsapp: +91 984 592 6984
Email: Sales@valsehydraulics.com
Website: www.valsehydraulics.com