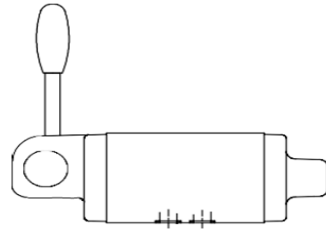


Ref. No. D 31200
Release Date: Oct 03

DIRECTIONAL CONTROL VALVE
DCV 10


www.valsehydraulics.com

DESCRIPTION



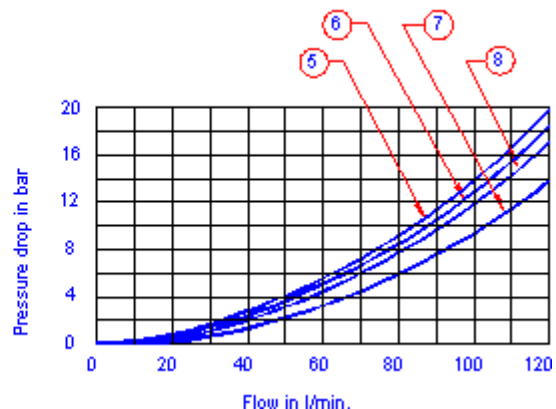
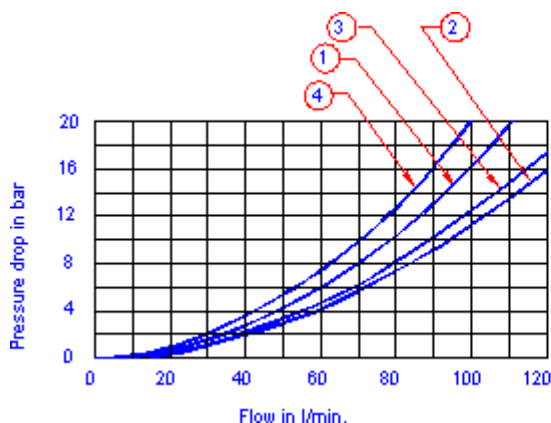
Completely encapsulated mechanism for protection against dirt. Five chamber design for better reduction in dynamic forces and longer valve life. Mounting styles — Sub plate body. Available as spring centered, spring off-set or detente model. Operating head can be rotated by 90° x 4 around spool axis for flexibility in mounting. Valve mounting interface Conforms to International and National Standards. Port configuration conforms to Factory Standards.

TECHNICAL SPECIFICATIONS

Construction..... Spool type.
Mounting Sub plate body.
Interface as per ISO 4401 - AC - 05 4 - A and IS 10187, CETOP 05
Mounting position..... Optional.
Flow direction..... As per spool type.
Operating pressure For port P,A and B..... 350 bar. (Standard Valve)
For port P,A and B 700 bar max.(For special High pressure valve)
For port T 100 bar. (Both type)
Hydraulic medium Mineral oil.
Viscosity range..... 10 cSt to 380 cSt.
Fluid temperature range -20 °C to +70 °C.
Fluid cleanliness requirement As per ISO 16/13 or better.
Maximum flow handling capacity .. Refer performance curves. (standard valve) Mass
..... 5.6 kg APPROX (Subplate body).

Performance Curves

Oil used: ISO VG 68, Viscosity: 68 cSt @ 40° C, Temp. @ Test: 50° C.



Valse Fluid Power Private Limited

Works:
Industrial Estate, Sagar Road,
Shimoga, Karnataka- 577204 (INDIA)

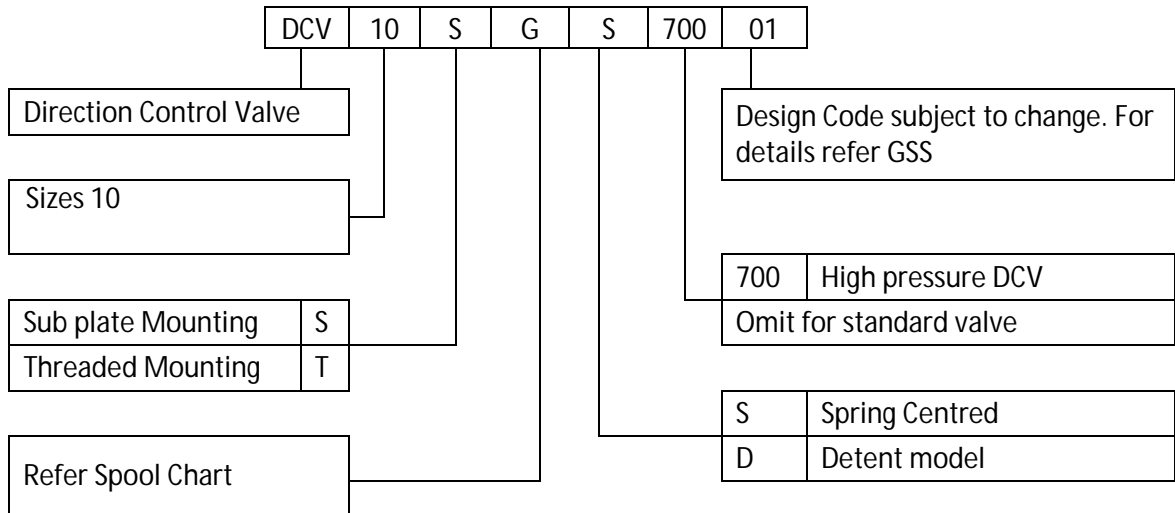
Design Center:
Industrial Estate, Udyambag
BELGAUM – 590 008 (INDIA)

Call / Whatsapp: +91 984 592 6984
Email: Sales@valsehydraulics.com
Website: www.valsehydraulics.com

Spool type	Direction of flow / Curve no.				
	P to T	P to A	P to B	A to T	B to T
A	--	1	1	--	--
C	--	1	1	2	3
E	--	1	1	2	3
F	4	1	1	7	3
G	4	1	1	2	3

Spool type	Direction of flow / Curve no.				
	P to T	P to A	P to B	A to T	B to T
H	5	6	6	7	8
J	--	1	1	7	8
L	--	1	1	7	3
M	--	6	6	2	3
P	4	1	1	2	8

ORDERING CODE



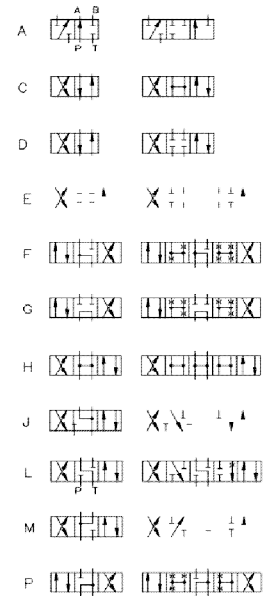
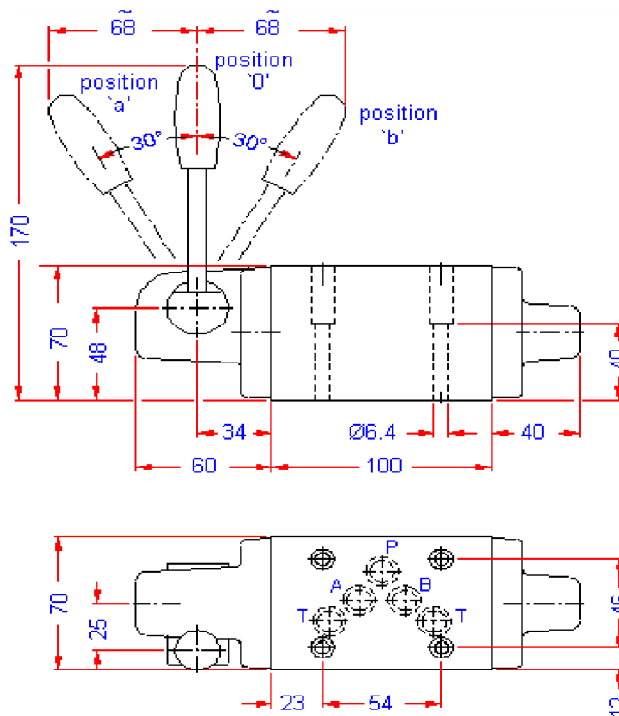
Valse Fluid Power Private Limited

Works:
Industrial Estate, Sagar Road,
Shimoga, Karnataka- 577204 (INDIA)

Design Center:
Industrial Estate, Udyambag
BELGAUM – 590 008 (INDIA)

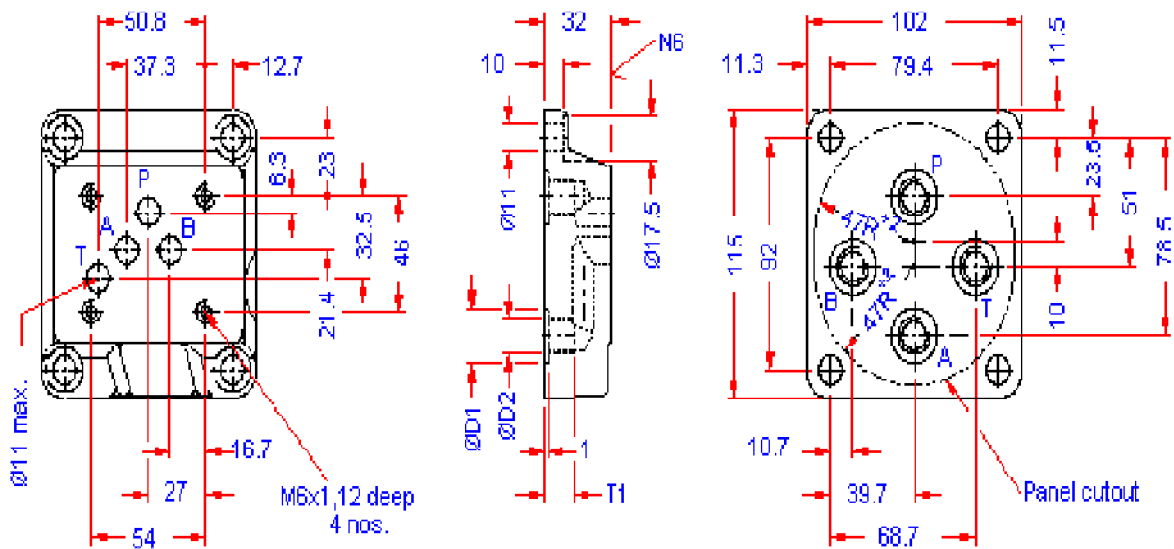
Call / Whatsapp: +91 984 592 6984
Email: Sales@valsehydraulics.com
Website: www.valsehydraulics.com

UNIT DIMENSIONS



SUBPLATE

Sub Plate	Ø D2
AG101	G1/4
AG102	G1/3
AG103	G1/2



Valse Fluid Power Private Limited

Works:
Industrial Estate, Sagar Road,
Shimoga, Karnataka- 577204 (INDIA)

Design Center:
Industrial Estate, Udyambag
BELGAUM – 590 008 (INDIA)

Call / Whatsapp: +91 984 592 6984
Email: Sales@valsehydraulics.com
Website: www.valsehydraulics.com

